

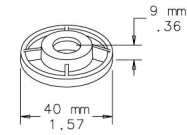
FRAME FEET



Four die-cast feet for use on the bottom of ProLine frames that raise the frame 9 mm.

BULLETIN: P20

Catalog Number	Description
PFFM12	Frame Feet



87798469

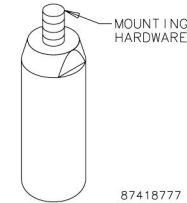
STAINLESS STEEL LEGS



Legs mount to the bottom of a solid base to elevate the enclosure 4 in. (100 mm) from the floor. The legs are made of Type 304 stainless steel and are appropriate for hose-down applications. Mounting hardware is included.

NOTE: These legs will not fit on the ProLine G2 Fully-Sealed Plinth Base.

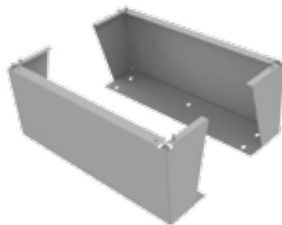
BULLETIN: P20S



87418777

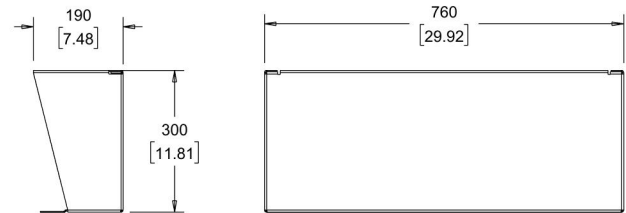
Catalog Number	Description
PLEGSS	(4) Stainless Steel Legs

FLOOR STAND KIT



The Floor Stand Kit mounts depth-wise on the ProLine G2 enclosure, securing both through the frames drain hole(s) and the corner block(s). The Floor Stand Kit is used to elevate the enclosure off the ground by 300 mm (~1ft). The stands are constructed from a 12-gauge (2.5 mm) steel, and finished in RAL 7035, textured light gray. Please note that at this time Hoffman is only offering a single 800 mm deep model, please consult the factory if a different depth is required.

BULLETIN: P40



89170554

Standard Product

Catalog Number	Description
P2AFSK8	Floor Stand Kit, 800 mm

Notes

